

## 🎓 What Participants Will Gain

- Practical skills in managing beef cattle
- Ability to plan and run a beef enterprise
- Improved understanding of feeding, breeding, and animal health
- Certificate of completion

## Accommodation & Meals

Participants are accommodated on campus under **CICE** with **comfortable lodging, nutritious meals**, and access to recreational and study facilities to enhance learning and networking

Contact details and location:

For further details, contact the Principal through the following:

Zambia College of Agriculture-Monze  
P.O.Box 660053  
Monze

Call/WhatsApp: +260 974 105 394  
+260 972 023 825  
+260 966 162 357

Email: [principal@zcamonze.edu.zm](mailto:principal@zcamonze.edu.zm)  
[www.zcamonze.edu.zm](http://www.zcamonze.edu.zm)

Location:  
Southern Province  
Monze District  
East of Monze town  
5 Km along the Monze-Chivuna road.

# ZAMBIA COLLEGE OF AGRICULTURE MONZE



## Beef Production (2 WEEKS)

Upgrade Your Skills in Modern Beef Production



- Training for sustainable development -

## □ Course Overview

This 14-day training provides **practical, hands-on knowledge** for farmers, students, and livestock enthusiasts who want to improve productivity and profitability in beef enterprises. This short course introduces participants to **best practices in beef cattle management**, covering breeding, nutrition, health, handling, and marketing. Training combines **classroom sessions and practical demonstrations**.

## □ Course Content

### Week 1: Foundations of Beef Production

#### Day 1–2: Introduction to Beef Cattle Management

- Beef breeds & breed selection
- Production systems (extensive, semi-intensive, intensive)
- Cattle identification & record-keeping

#### Day 3: Housing & Farm Structures

- Beef cattle housing requirements
- Space, ventilation, and flooring



### Day 4–5: Beef Nutrition & Feeding

- Nutrient requirements by age & stage
- Pasture management
- Feed formulation & ration balancing
- Water requirements & mineral supplementation

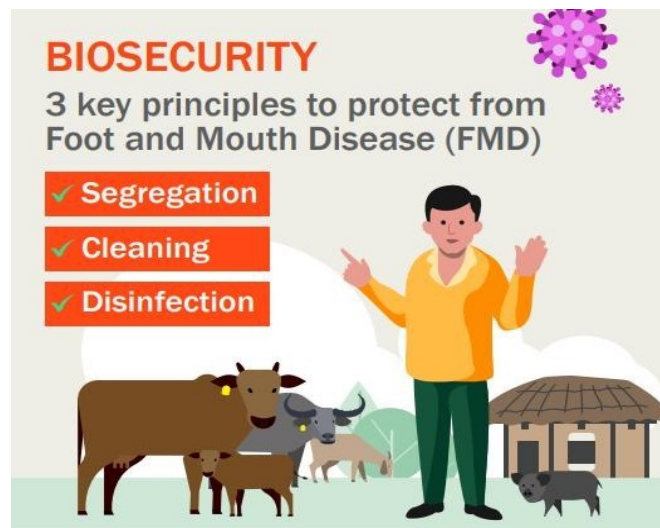
### Week 2: Advanced Beef Management

#### Day 6–7: Breeding & Reproduction

- Heat detection & mating systems
- Pregnancy diagnosis
- Calving management
- Selection of breeding stock

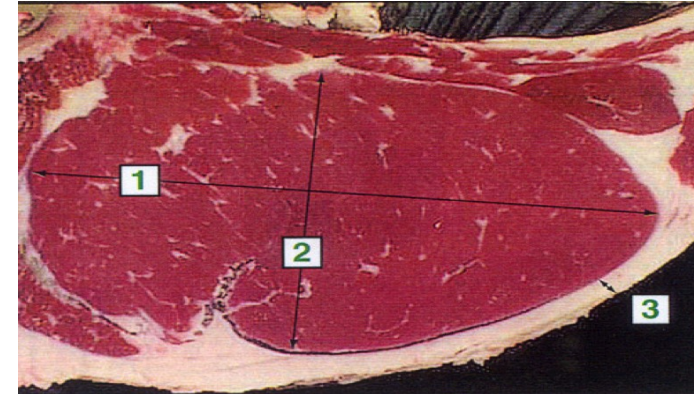
#### Day 8: Animal Health Management

- Common beef cattle diseases
- Vaccination schedules
- Parasite control
- Biosecurity & herd health plans



### Day 9: Beef Handling, Welfare & Marketing

- Safe animal handling techniques
- Carcass grading basics
- Market standards & pricing
- Value chain opportunities



### Day 10: Field Practical & Assessment

- Hands-on activities
- Demonstrations at farm/handling unit
- Final evaluation & certification

